

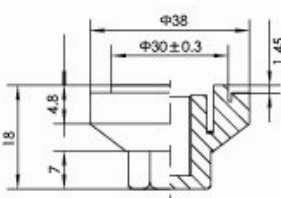
# Part Number System



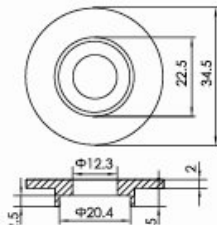
## Part Number System for Screw Type

EC	G	2G	BP	682	M	E	155	B	A	□*
Capacitor Type	Terminal Type	Rated Voltage Code	Series Code	Capacitance Code (μF)	Capacitance Tolerance	Diameter	Length	Mounting	Terminal Options	Supplyment Code
EC= Electrolytic Capacitor	Screw=G	10=1A	CD135 =BP	100 =101	±20% =M	36 =A	53 =053	Bolt =B	For terminal please refer to "Terminal Dimensions"	
		16=1C	CD136 =PK	470 =471	±15% =L	40 =B	65 =065	Bracket=C		
		25=1E	CD137 =PX	1000=102	±10% =K	51 =C	96 =096	3-leg Bracket=Y		
		35=1V	CD138 =PC	2200=222	+30/-0% =F	64 =D	100=100	2-leg Bracket=I		
		50=1H	CD139 =BL	6800=682	+20/-0% =R	77 =E	155=155	No Bracket=N		
		63=1J	CD13L =PL		+75/-10%=U	90 =F	236=236			
		80=1K	CD138S =WP		+50/-10%=T	101 =G				
		100=2A	CD13H =BH		+30/-10%=Q					
		160=2C	CD139S =HC		+20/-10%=V					
		200=2D	CD13P =HP		+20/-5% =H					
		250=2E			+50/-20%=S					
		350=2V			+20/-15%=N					
		400=2G								
		420=2X								
		450=2W								
		500=2H								
		550=2Y								
575=2Z										
600=2S										
630=J2										

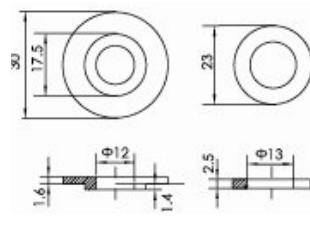
## Accessories: Bolt Mounting (Code B)



◆Nylon cap nut M12  
Order code: CN131C-01

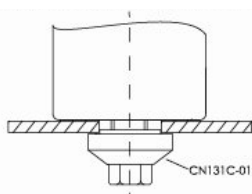


◆Insulating washer(plastic PP)  
Order code: CN131C-11

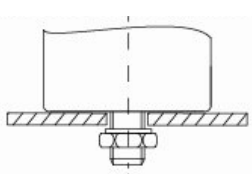


◆Insulating washer(plastic PBT)  
Order code: CN131C-12

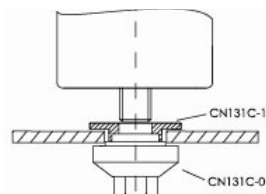
●Non-insulated mounting with cap nut



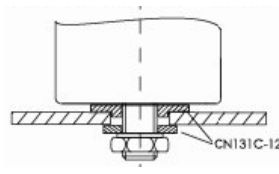
●Non-insulated mounting with steel nut



●Insulated mounting with cap nut



●Insulated mounting with steel nut



Note: 1) Maximum tightening torque M12: 12.5Nm

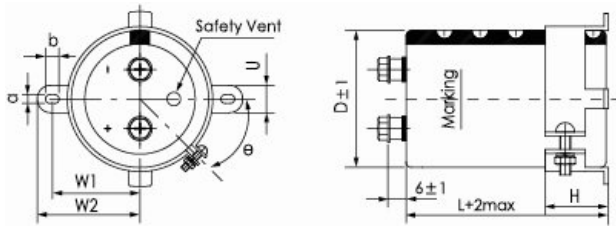
2) Recommended mounting hole diameter: 30.5mm(mounting with cap nut)

# Part Number System



## Accessories: Bracket Mounting/mm

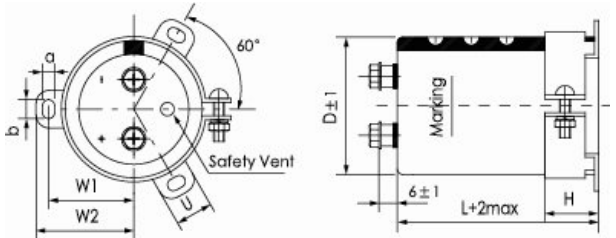
### 2-legs Bracket (Code I)



ΦD	W1	W2	a	b	U	H	Order Code
36	48	58	3.8	7	10	15	CT136B-01
51	68	80	5	7	14	30	CT151B-01
64	81	93	5	7	14	30	CT164B-01
77	93.5	106	5	7	14	30	CT176B-01
90	108	120.5	5	7	14	30	CT189B-01
90	108	120.5	5	7	14	30	CT189B-01

\*θ is optional for 45° or 30°

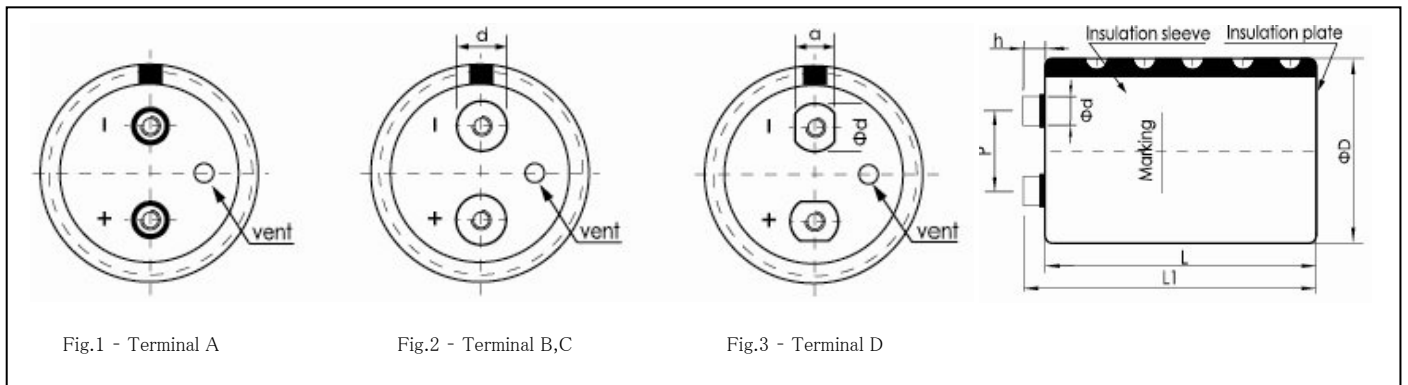
### 3-legs Bracket (Code Y)



ΦD	W1	W2	a	b	U	H	Order Code
51	31.8	36.5	5	7	14	30	CT151B-01
64	38.1	42.6	5	7	14	30	CT164B-01
77	44.5	49.2	5	7	14	30	CT176B-01
90	50.8	55.6	5	7	14	30	CT189B-01
101	57.5	63.5	5.5	8	20	35	CT199B-02

\*Bracket will be delivered separately. If bracket is not necessary, enter "N" for the type of bracket code.

## Terminal Dimensions /mm



Terminal Code	Can Diameter D±1mm Φ	Thread	Φd± 0.3mm	Thread Depth	h± 0.5mm	L1 ± 2.0mm	Drawing
A	51~90	M5	10.0	9	6.0	L + h	Fig.1
B	77~90	M6	17.2	11	6.0	L + h	Fig.2
C	64	M5	13.0	9	6.0	L + h	Fig.2
	77~90	M5	17.2	11	6.0	L + h	Fig.2
D	51	M5	13 (a=10)	9	5.0	L + h	Fig.3
	64	M5	15 (a=13)	9	6.0	L + h	Fig.3
	77	M6	15 (a=13)	9	6.0	L + h	Fig.3

\* Screws will be delivered separately.

\*Special Terminals (Low post h=3.2, 1/4-28, 10-32 thread) are available on request.

\*Hex head M5x 10 and M6x 12 are standard screws. Longer screws (M5x20 e.g) are available on request.

\*Max tightening torque for screw terminal M5:3Nm, M6: 6Nm.

\*Max ripple current for screw terminal M5:60 Arms, M6:100 Arms.

Note: Generally, screw terminal capacitors should mount upright with terminal side face upwards.

If the capacitors is mounted horizontally, safety vent should located in 12,9 o' clock position.

Safety vent in 6 o' clock position or downwards is not allowed.